



This popular walk starts at Charlottes Pass and follows the Old Kosciuszko Road, as it winds through the mountains, to Rawsons Pass, then continues to the top of Kosciuszko. The walk passes the well known Snowy River and Seamans Hut. From Rawsons Pass it is a fairly short walk up the footpath to Mt Kosciuszko's peak. On a clear day the views span all the way to the horizon in every direction from the highest spot in Australia.

Kosciuszko National Park

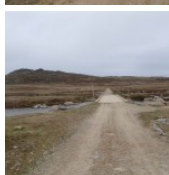
Length: 18.5 km
Time: 7 Hrs
Climb: 610 m
Style: Return
Rating: Track: Hard
Where: 14825.9 km SE of
Transport: car



Visit www.wildwalks.com for more info



Side trips and Alternate routes mentioned in these notes are not included in the tracks overall rating, distance or time estimate. The notes also only describe the side trip and Alternate routes in one direction. Bushwalking can be fun and interesting when you are well prepared. Please ensure you and your group are well prepared and equipped for all possible dangers. The authors, staff and owners of wildwalks take care in preparing these notes but do not accept responsibility for any inconvenience, loss or injury sustained when using these notes. Please take care and feel free to provide feedback through our website.

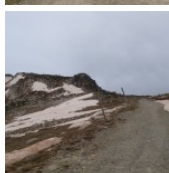


NSW National Parks and Wildlife Service

NPWS is a proud sponsor of Wildwalks.

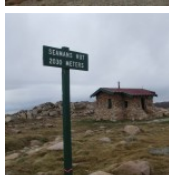
For more information on the spectacular parks and reserves of NSW

Visit www.nationalparks.nsw.gov.au



End of Kosciuszko Road to Snowy River bridge 4.5km 1 Hrs 20 mins

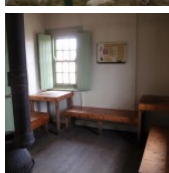
(From S) From the end of Kosciuszko Rd, at Charlotte's Pass, this walk heads along a wide service trail, following the arrow on the big green sign pointing to "Summit walk". The walk initially dips down a bit and heads through the snow gums. This walk soon leaves the snow gums behind, as the landscape opens up to give fantastic views of the Snowy River and the valley on the right. After about 1km, the walk passes a yellow sign 'MT K 8' and snow poles, on the right. This walk follows the service trail and gently undulates along the side of the ridge, passing several 'Mt K' milestone signs. The walk heads up onto the top of the ridge and down the other side, to an unsignposted concrete bridge over Merritts Creek. The bridge is soon after the 'Mt K 5' sign, and just before the signposted Snowy River bridge (which is visible a little further on).



From the bridge, this walk follows the service trail west through the valley for a short while until it comes to the Snowy River bridge.

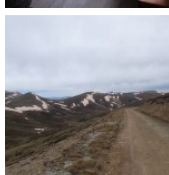
Snowy River bridge to Seamans Hut 1.5km 25 mins

(From 4.48 km) From the bridge, this walk heads north-west up the service trail towards Seamans Hut. The walk winds up the long hill, to the top of the ridge-line, where it reaches Seamans Hut.



Seamans Hut

This hut was erected in 1929, after a young skier named Laurie Seaman perished in a blizzard when he was separated from his group. The hut was built using money donated by Seaman's parents, for the use of those who might need emergency shelter in the mountains. [More info](#)



Seamans Hut to Rawson Pass 1.6km 30 mins

(From 5.99 km) From Seamans Hut, this walk follows the management trail, heading west up the gentle hill. The trail winds steadily along the side of the ridge (keeping the valley to the right), passing Australia's highest toilet block, and almost immediately coming to the intersection of the Kosciuszko walk, at Rawson Pass.

Rawson Pass

Rawson Pass is where the old Kosciuszko Road, from Charlottes Pass, meets the metal walkway from Thredbo, and claims the title of having the highest public toilet in Australia. This recently-added facility is perfectly positioned for those taking the walk up to the top of Kosciuszko.

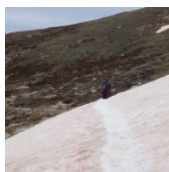


Rawson Pass to Mt Kosciuszko 1.6km 35 mins

(From 7.6 km) From the intersection, this walk follows the 'Kosciuszko walk' signs up the stone pathway. The pathway soon becomes a dirt track and winds up and around, keeping the peak of Mt Kosciuszko to the left, until it comes to the signposted intersection with the Main Range track. (Signpost may be covered in snow in winter)

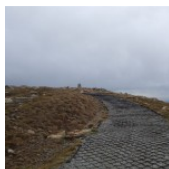


From the intersection, this walk follows the dirt path, winding steadily up and around the mountain, to the southern end before reaching the peak.



Mt Kosciuszko

Mt Kosciuszko is the highest peak on the Australian continent at 2228m above sea level. It was named by the Polish explorer Count Paul Edmund Strzelecki and named in honour of the Polish national hero General Tadeusz Kościuszko. Now a popular tourist attraction, thousands of people walk up to the summit each year. On a clear day, the 360degree views from the summit, across the roof of Australia are fantastic. There are higher mountains elsewhere on Australian Territory. 'The highest mountains in Australian Antarctic Territory are Mt McClintock (3490 meters) and Mt Menzies (3355 meters).'



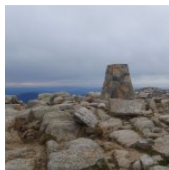
This is a 'Return' style walk - retrace your steps back to the beginning when you are ready.

A list of paper topographical maps that cover this walk

[Perisher Valley](#) 1:25 000 Map Series

Suggan Buggan 1:50 000 Map Series

Kosciuszko 1:100 000 Map Series



Nearby outdoor and camping stores

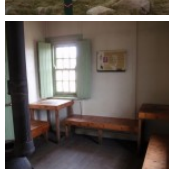
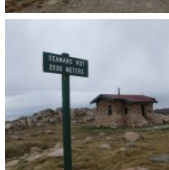
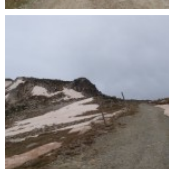
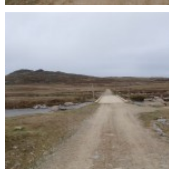
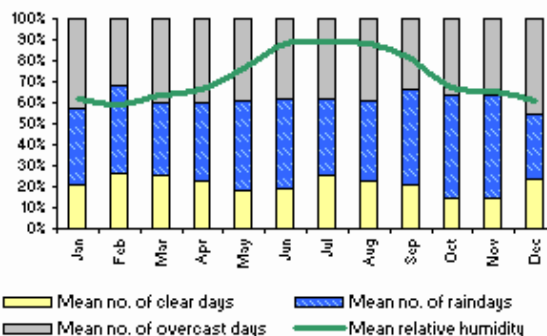
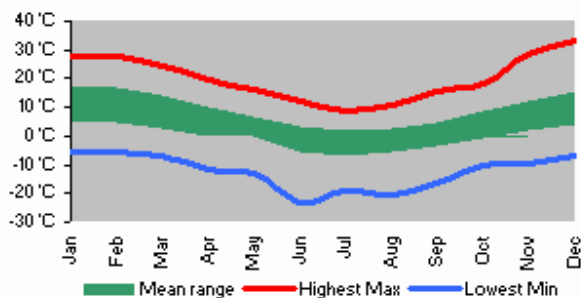
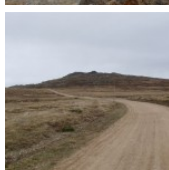
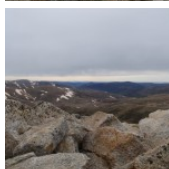
Paddy Pallin Adventure Centre Thredbo Turnoff Jindabyne (02) 6456 2922

Wilderness Sports Nuggets Crossing Jindabyne 1800 654 168

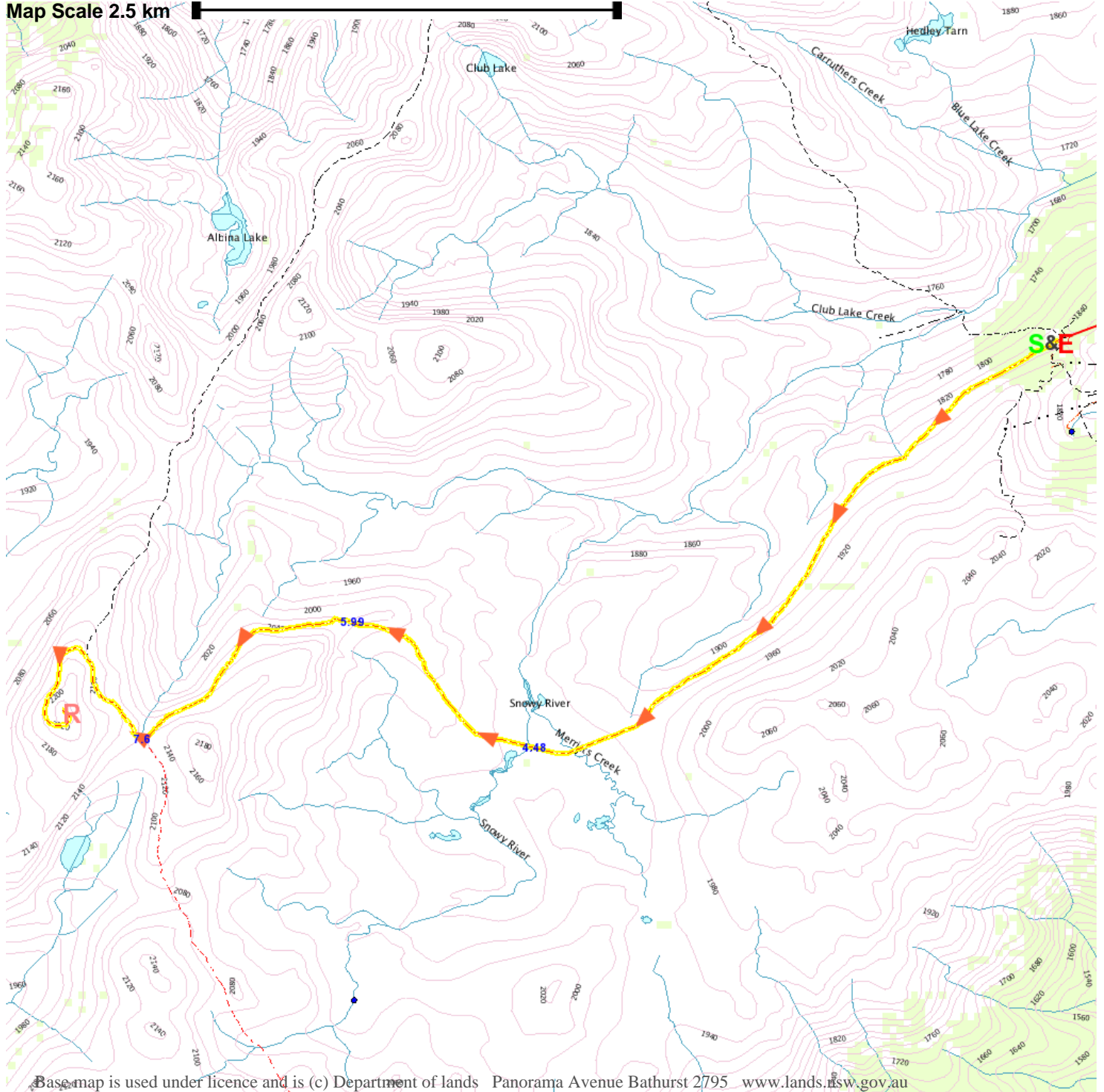
Larry Adler Ski & Outdoor 3 Nuggets Crsng Jindabyne (02) 6457 2233

Snowy Camping World 106 Sharp St Cooma (02) 6452 2729

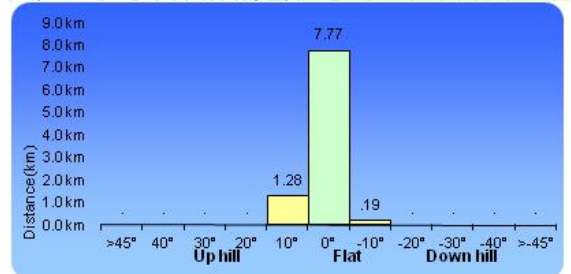
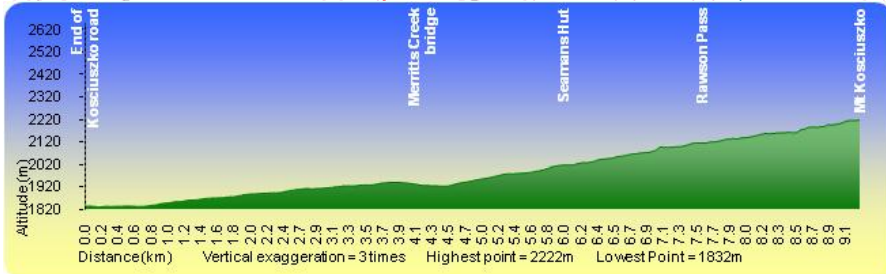
Tumuts Fishing Camping & Outdoor 56 Wynyard St Tumut (02) 6947 1100



Map Scale 2.5 km



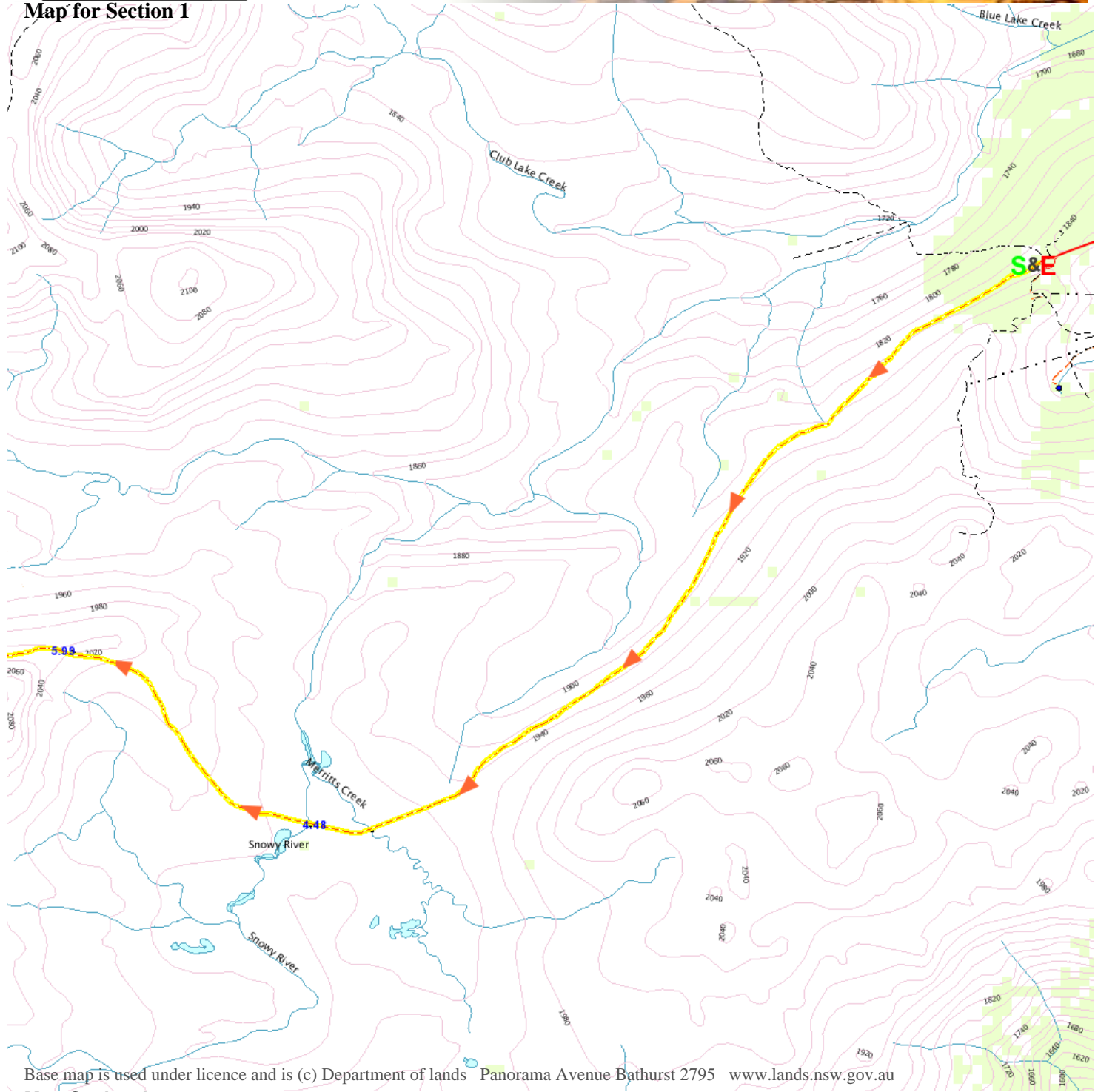
Base map is used under licence and is (c) Department of lands Panorama Avenue Bathurst 2795 www.lands.nsw.gov.au





Summit walk - Charlotte's Pass to Mount Kosciuszko

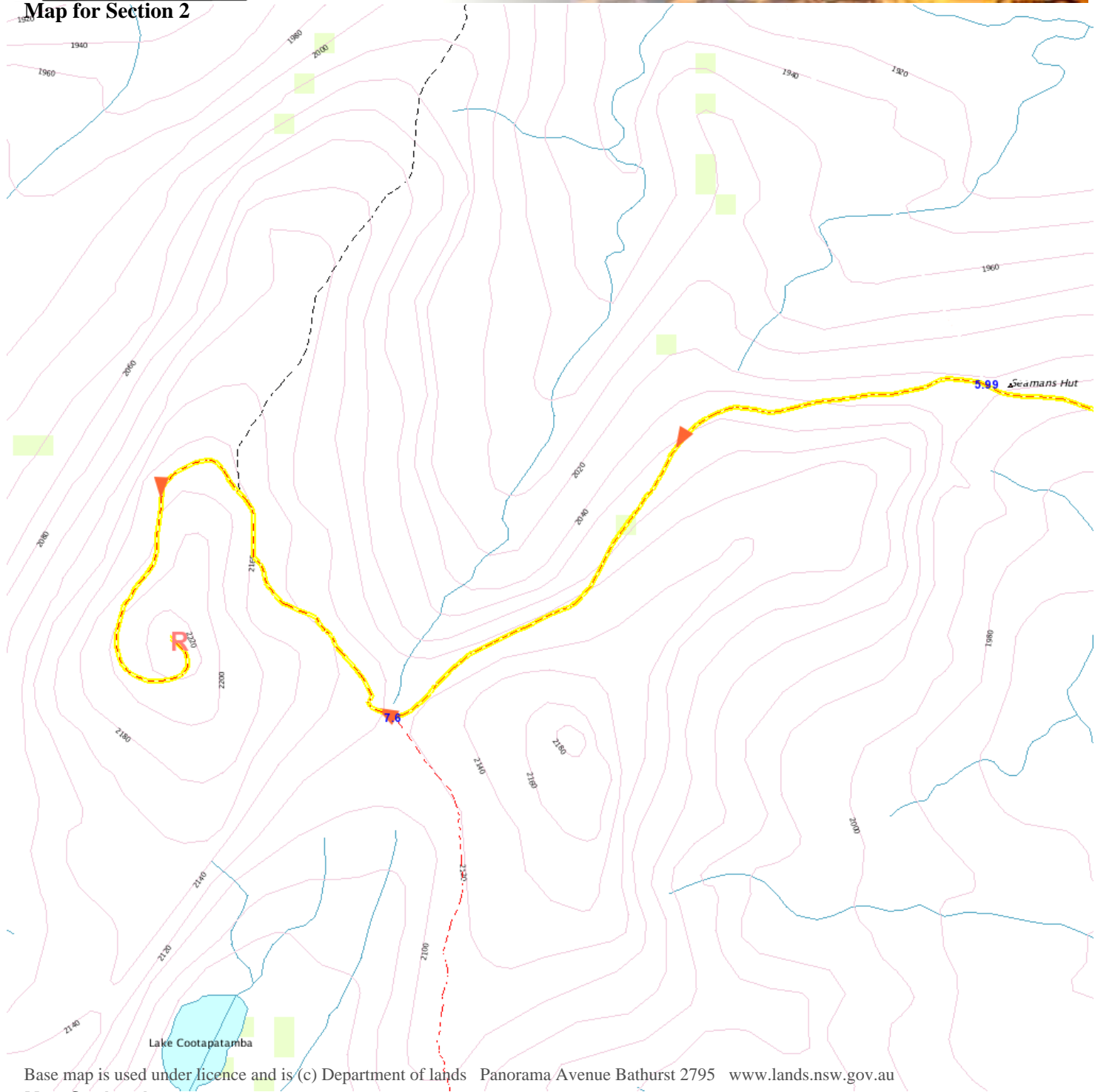
Map for Section 1





Summit walk - Charlotte's Pass to Mount Kosciuszko

Map for Section 2



Base map is used under licence and is (c) Department of lands Panorama Avenue Bathurst 2795 www.lands.nsw.gov.au

Map Scale 1 km